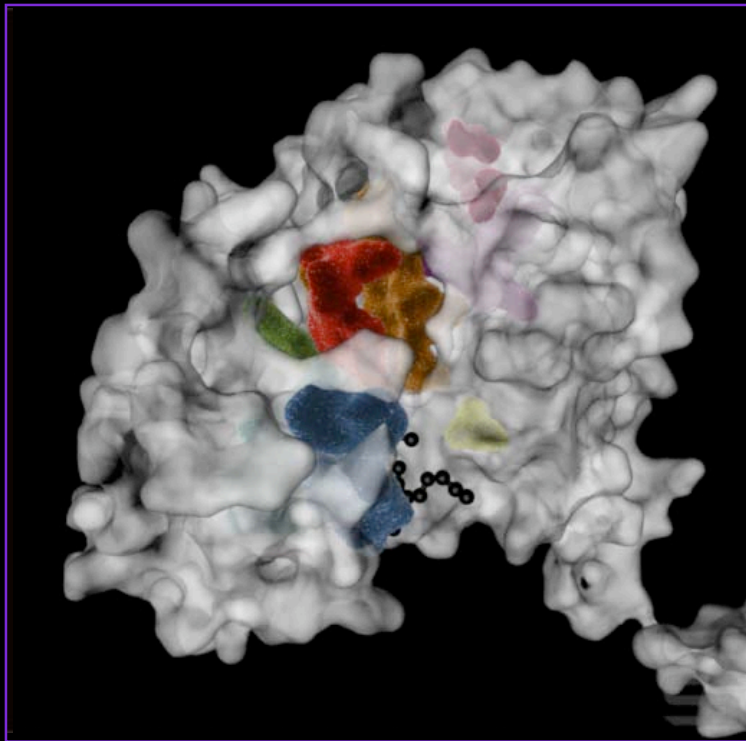


Protein Kinases are Major Drug Targets



*EGF receptor 3D structure with
kinase inhibitor drug Tarceva*

■ Kinase inhibitors are proven drugs

■ 11 approved in last 6 years

- Gleevec (Novartis, \$2.2B in 05)
- Avastin (Genetech/Roche, >\$1.5B in 06)
- Herceptin (Genetech, \$0.75B in 05)
- Erbitux (Imclone/Merck, \$0.67B in 05)
- Iressa (AstraZeneca, \$0.39B in 04)
- Rapamune (Wyeth, ~\$0.3B in 05)
- Sprycel (BristolMyersSquibb, >\$0.3B in 07)
- Tarceva (Genetech/Roche, \$0.28B in 05)
- Sutent (Pfizer, >\$0.2B in 06)
- Nexavar (Onxy Pharm/Bayer, >\$0.15B in 06)
- Fasudil (Asahi Kasei, N/A)

■ >75 in clinical trials

■ >500 in pre-clinical trials