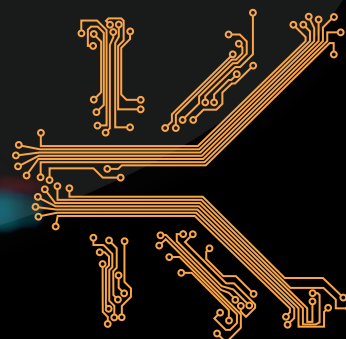




**Adducin- $\alpha$**  S726  
**Adducin- $\gamma$**  S693  
**B23 (NPM)** S4  
**CDK1/2 T14+Y15**  
**CREB1** S133  
**Erk1** T202+Y204  
**Erk2** T185+Y187  
**GSK3 $\alpha$**  S21  
**GSK3 $\alpha$**  Y279  
**GSK3 $\beta$**  S9  
**GSK3 $\beta$**  Y216  
**JNK** T183+Y185  
**Jun** S73  
**MEK1** S217+S221  
**MEK3** S189  
**MEK6** S207  
**Msk1** S376  
**NR1** S896  
**p38 $\alpha$  MAPK** T180+Y182  
**PKB $\alpha$  (Akt1)** T308  
**PKB $\alpha$  (Akt1)** S473  
**PKC $\alpha$**  S657  
**PKC $\alpha$ / $\beta$ 2** T638/T641  
**PKC $\delta$**  T507  
**PKC $\epsilon$**  S729  
**PKR1** T451  
**Raf1** S259  
**Rb** S780  
**Rb** S807+S811  
**RSK1/2** T359/T365  
**S6K $\alpha$**  T389  
**Smad1/5/9** S463+S465  
**Src** Y418  
**Src** Y529  
**STAT1** Y701  
**STAT3** S727  
**STAT5** Y694

**Kinetworks™**  
**is unmatched for:**

- CONVENIENCE
- ACCURACY
- HIGH SENSITIVITY
- FAST TURN AROUND
- REPRODUCIBILITY
- AFFORDABILITY
- QUANTIFICATION
- BREADTH



***www.kinexus.ca***