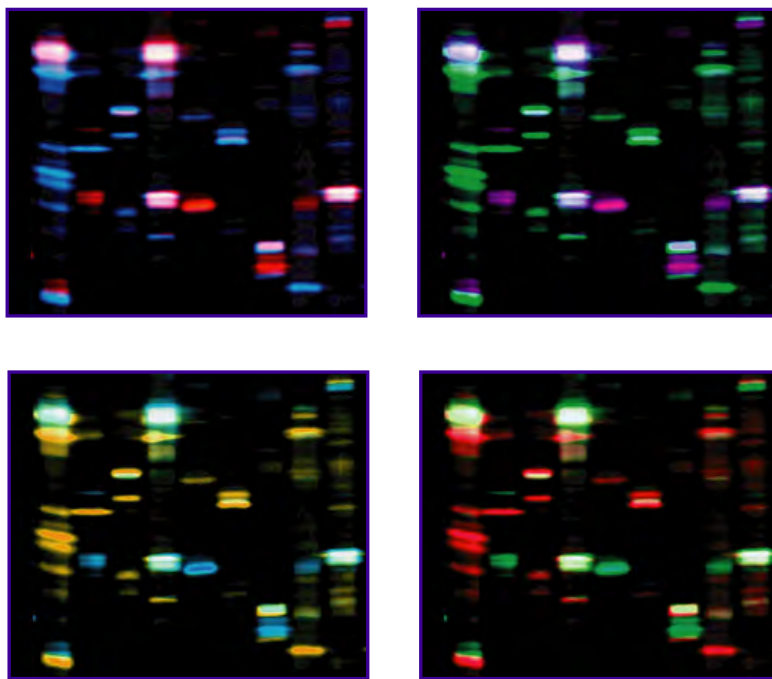


# GRAPHICS SERVICES

## CUSTOMER INFORMATION PACKAGE

**OUR CUSTOM GRAPHICS SERVICES PERMIT CLIENTS TO HAVE PRESENTATION AND PUBLICATION READY BLOT IMAGES, GRAPHS AND FIGURES BASED ON THEIR KINETWORKS™ MULTI-IMMUNOBLOTTING RESULTS PRODUCED ACCORDING TO THEIR SPECIFICATIONS AT A VERY REASONABLE COST.**



This Information Package has been designed to assist you in using our Custom Graphics Services. We will endeavor to provide you with your graphics results within two weeks of ordering. If after reviewing this information you have any questions about our services, please contact our Technical Service Representatives by calling toll free in North America 1-866-KINEXUS or (604) 323-2547 Extension 1 or by e-mail at "info@kinexus.ca". This information is regularly updated and available from our website at "www.kinexus.ca".



## TABLE OF CONTENTS

	PDF Page No.
1. Introduction .....	3
2. Types of Graphic Images.....	3
Kinetworks™ Blot Overlays .....	4
Kinetworks™ Figures .....	5
Kinetworks™ Bar Graphs .....	6
Signal Transduction Pathway Charts .....	7
3. Forms to be Completed .....	7
Graphics Services Order Form (CG-SOF-01) Description .....	7
Graphics Services Description Form (CG-SOF-01) Description ...	7
4. Graphics Services Order Form (CG-SOF-01) .....	9
5. Graphics Services Description Form (CG-SOF-01) .....	10



## **KINETWORKS™ CUSTOM GRAPHICS IMAGES**

### **1. INTRODUCTION**

The Kinetworks™ signal transduction protein profiling services are a convenient and cost-effective solution to assist scientists in the discovery of productive research leads. These services utilize a proprietary technology based on multi-immunoblotting that generates a unique identification pattern for each sample analyzed and can provide information about the quantitative expression level for each protein detected, its covalent modification, its subcellular location and the identification of protein-protein interactions. It is highly accurate, since the detection of a target protein is based on its immunoreactivity and apparent molecular mass.

As part of our commitment to ensuring that our clients are able to fully benefit from their Kinetworks™ multi-immunoblotting services, we are pleased to offer custom graphics services to assist in the production of presentation and publication ready materials based on the results of our proteomics services. We can prepare colored slides suitable for Microsoft® PowerPoint presentation or black and white figures that are suitable for journal publication. Our standard charge is \$89 per slide or figure. We offer such a low price for this service as it is partly subsidized by our Sales and Marketing program. We feel that if you present your Kinetworks™ results, then we also benefit from the increased exposure.

The PowerPoint slides can be produced with overlaid images of the Kinetworks™ immunoblot scans. In the case of the Kinetworks™ immunoblots, all of the detected target proteins are provided both unlabeled and labeled with their names on the images. Powerpoint slides may also be generated for bar graph representation of the Kinetworks™ results. Furthermore, we can also prepare simple diagrammatic slides of cell signaling pathways.

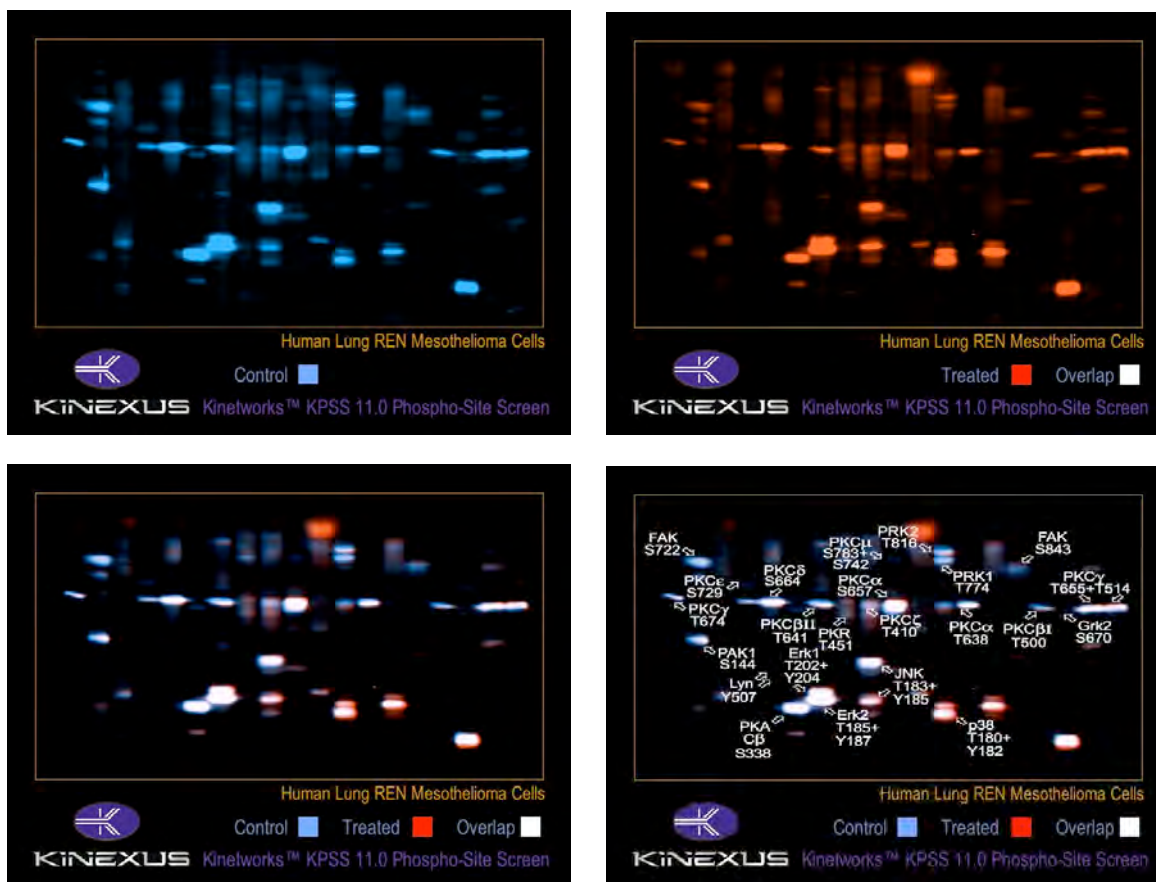
For journal publication, we can prepare black, white and gray scale figures of either Kinetworks™ immunoblot images or Kinex™ microarray scans. We can also produce black and white figures of bar graph representation of the Kinetworks™ results. These figures can be supplied in Adobe® Illustrator, Adobe® Photoshop (eps, tiff) or Adobe® pdf format.

Turnaround time for these graphical services is typically within two weeks. All figures are delivered in electronic format by e-mail.

### **2. TYPES OF GRAPHIC IMAGES**

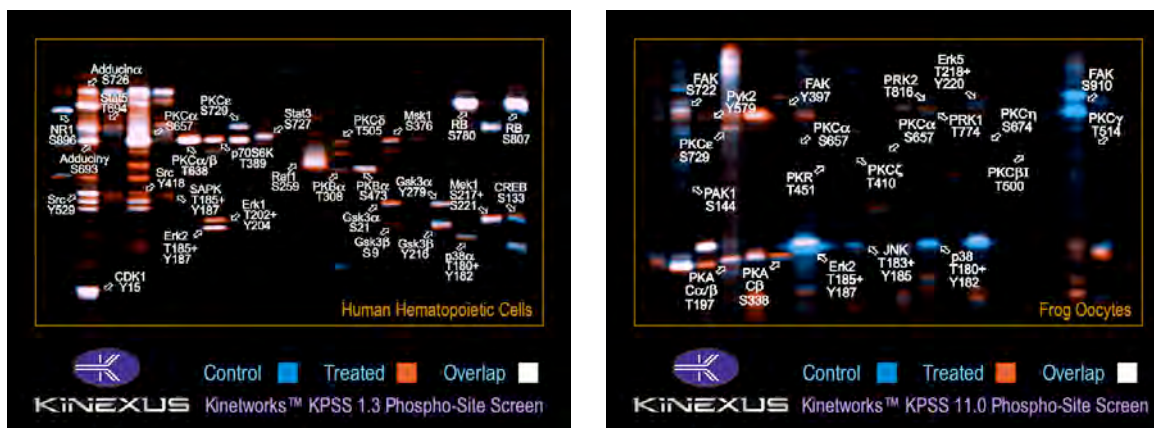
#### **Kinetworks™ Blot Overlays**

This is a powerful visual comparison of immunoblots that can reveal changes that occur between any two samples analyzed using the same Kinetworks™ screen. The samples are differentially colored (control blot is blue; treatment blot is red) and the images are superimposed with the major target proteins detected labeled. With this approach, proteins that are reduced in expression or phosphorylation appear blue, proteins that are reduced in expression or phosphorylation appear red, and proteins that are unchanged appear white.



Examples of a PowerPoint building slide.

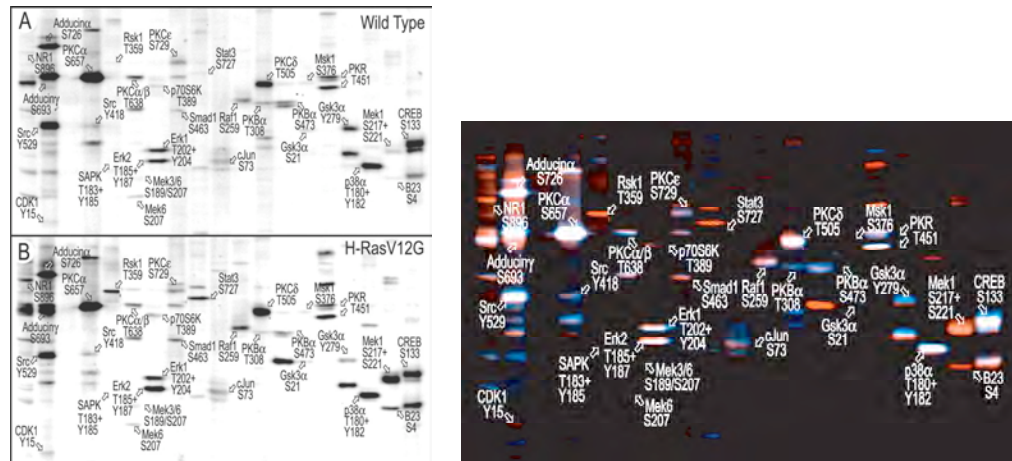
For each PowerPoint slide overlay ordered, the client will receive back 4 images as shown above: Control sample without target proteins labeled, treated sample without target proteins labeled, and overlay of the 2 samples with and without the target proteins labeled. This format is excellent for seminar presentations, publications, grants, or for simply visualizing changes that occurred in your experimental model system. Clients can select from 4 different colour combinations of blue/red, green/purple, green/red and light blue/orange or shades of grey, which is the black & white option. The differential regulation of detected proteins in various colour combinations is shown on the cover of this Graphics Services Customer Information Package.



Examples of two more sets of Kinetworks™ immunoblots overlaid images in PowerPoint format.

## Kinetworks™ Figures

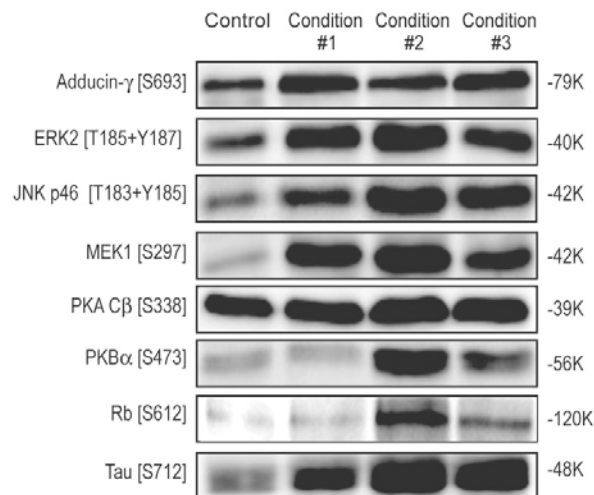
This is a visual comparison of a control and experimental immunoblot side by side with each of the target proteins labeled.



Example of two immunoblot images prepared in publication format and as a coloured overlay.

A grey scale image of the two immunoblots are shown separately above and also as a combined coloured overlay image. In some cases, the grey scale images of a control and a treatment blot may be more suitable for publication in a scientific journal.

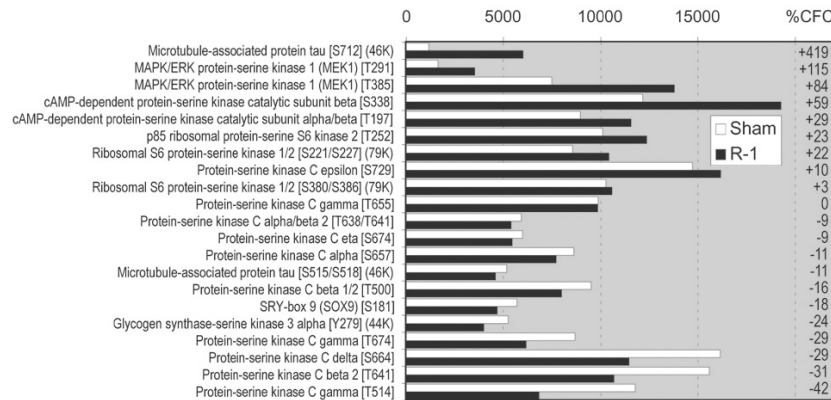
The Custom Kinetworks™ KCSS 1.0 screen allows for the analysis of 8 different cell/tissue lysates with up to 3 antibodies on the same immunoblot. An example of the combined results from several KCSS 1.0 screens are shown below.



Example of a publication grey scale figure of immunoblot results from multiple KCSS 1.0 screens.

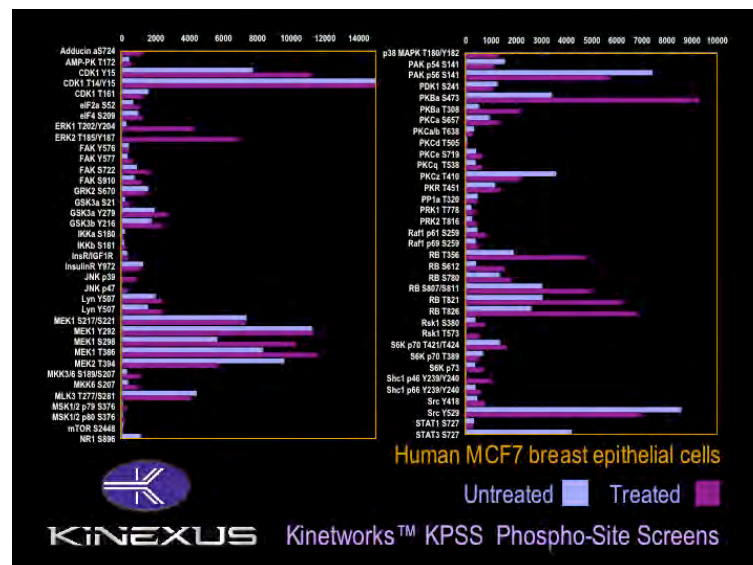
## Kinetworks™ Bar Graphs

This corresponds to a graphical comparison of the quantitative differences that occur between two samples analyzed by the same Kinetworks™ screen. The graph can be arranged in alphabetical order by protein name (A-Z) or showing the changes from highest to lowest percent change.



Example of a grey scale Kinetworks™ bar graph for publication purposes.

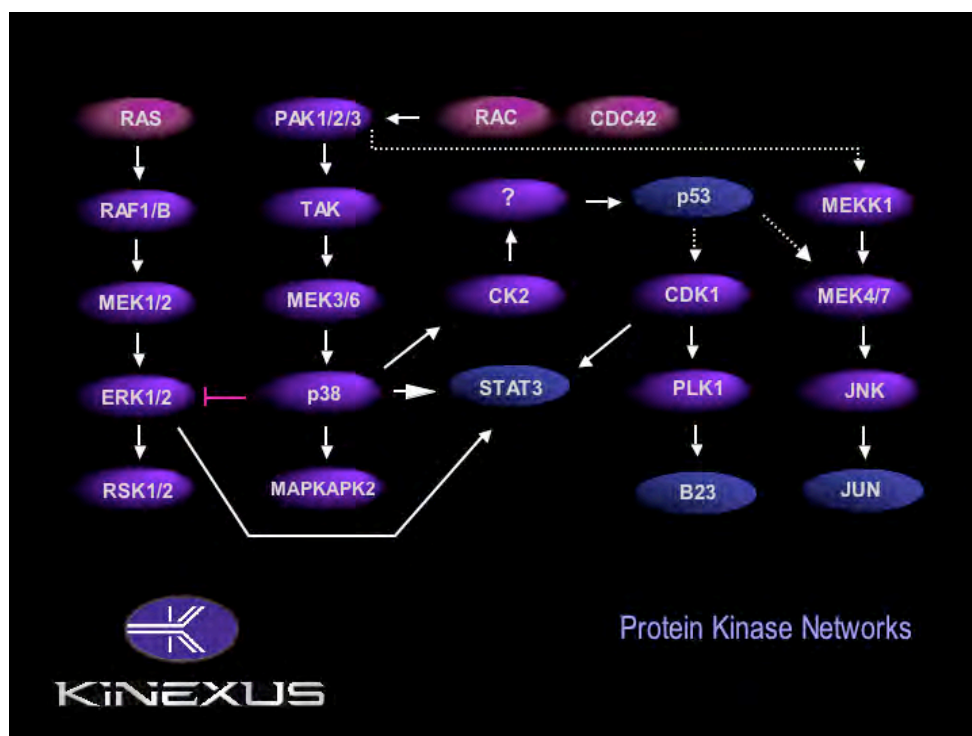
For each bar graph ordered, the client will receive a graph showing the percent changes of each target protein detected in the control and the treated sample as shown in the example above. Clients can select from 3 different colour combinations of blue/red, green/purple or light blue/orange or shades of grey. In the example below in PowerPoint slide format, with results from human MCF7 breast epithelial cells, the blue represents the untreated control and the purple represents treatments with 5 uM dimethyl varacin for 2 hours. Interestingly, this drug revealed profound increases in the phosphorylation of MAP kinases.



Example of a coloured Kinetworks™ bar graph in PowerPoint format.

## Signal Transduction Pathway Charts

This corresponds to simple pathway representation of cell signalling proteins that may be altered by a treatment as revealed by a Kinetworks™ analysis. The number of proteins depicted in such figures should be less than 16 to avoid over complexity in presentation.



Example of a coloured pathway chart in PowerPoint format.

### 3. FORMS TO BE COMPLETED

**All customers are required to complete the following forms for each order placed:**

- A. Services Order Form (CG-SOF-01).
- B. Services Description Form (CG-SDF-01)

#### A. Services Order Form (CG-SOF-01)

*Please ensure:*

- Shipping address and contact name and numbers are specified
- Billing information is completed as outlined in Section C
- Any special promotional vouchers or quotations are listed in the billing sections
- Include a Purchase Order, Visa or MasterCard number for payment
- The form is signed and dated
- The form is transmitted by facsimile to 1-604-323-2548 with a completed copy of the Graphics Services Description Form (CG-SDF-01)

#### B. Services Description Form (CG-SDF-01)

*Please ensure:*

- For the Kinetworks™ Overlay and Figures, complete Sections A-E
- For the Kinetworks™ Bar Graph complete Sections A-F

- For the Signal Transduction Pathway Chart, complete Sections A, B, C and Section G
- The form is signed and dated
- The form is transmitted by facsimile to 1-604-323-2548 with a completed copy of the Graphics Services Order Form (CG-SOF-01)

Please contact our technical service representatives at 1-866-KINEXUS (1-866-546-3987) or 1-604-323-2547 Extension 1 or by e-mail at [info@kinexus.ca](mailto:info@kinexus.ca) if you have additional questions about our custom graphics services.

Form: **CG-SOF-01****CUSTOM GRAPHICS****SERVICES ORDER FORM****KINEXUS ORDER NUMBER****CUSTOMER INFORMATION**☐ Dr ☐ Mr ☐ Ms

Name of Authorized Representative or Principal Investigator

Title/Position

Company Name or Institute

Department

Street Address

City

State or Province

Country

Zip or Postal Code

Email Address

(Area Code) Telephone Number

(Area Code) Facsimile Number

Contact Person (if different from Authorized Representative)

Email Address

(Area Code) Telephone Number

**CUSTOM GRAPHICS SERVICES****SEND RESULTS BY EMAIL TO:** ☐ AUTHORIZED REPRESENTATIVE/INVESTIGATOR **AND/OR** ☐ CONTACT PERSON**BILLING INFORMATION***Choose the number and type of graphic services of interest and complete the Service Description Form (CG-SDF-01)*

Number of Kinetworks™ Blot Overlays	_____	@ \$89 U.S. per overlay	\$ _____
Number of Kinetworks™ Figures	_____	@ \$89 U.S. per graph	\$ _____
Number of Kinetworks™ Bar Graphs	_____	@ \$89 U.S. per figure	\$ _____
Number of Signal Transduction Pathway Charts	_____	@ \$89 U.S. per figure	\$ _____

**Total number of graphic services requested:** \_\_\_\_\_ **SUBTOTAL** = \$ \_\_\_\_\_*Quotation or Reference Number if applicable:* \_\_\_\_\_ - \$ \_\_\_\_\_**TOTAL COST FOR THIS ORDER** = \$ \_\_\_\_\_**FOR CANADIAN CUSTOMERS ONLY:**

Add an additional 7% to the above total for GST (No. 893907329 RT0001): + \$ \_\_\_\_\_ = \$ \_\_\_\_\_

**TOTAL AMOUNT PAYABLE IN FUNDS****PAYMENT METHOD**☐ PURCHASE ORDER ACCEPTED FROM COMPANIES AND INSTITUTES WITH APPROVED CREDIT. P.O. NUMBER \_\_\_\_\_☐ VISA OR ☐ MASTERCARD

Print Cardholder Name

Visa or MC Number

Expires (M/Y)

Cardholder Signature

**BILLING INFORMATION**☐ SEND INVOICE TO CUSTOMER AT ABOVE ADDRESS OR ☐ SEND INVOICE TO ACCOUNTS PAYABLE CONTACT:☐ Dr ☐ Mr ☐ Ms

Accounts Payable Contact Name

Company Name or Institute

Street Address

City

State or Province

Country

Zip or Postal Code

(Area Code) Telephone Number

**AUTHORIZATION**

CUSTOMER HAS CAREFULLY COMPLETED A CUSTOM GRAPHICS SERVICES DESCRIPTION FORM (CG-GDF-01) TO DESCRIBE THE GRAPHICS SERVICES OF INTEREST:

Print Name of Authorized Representative

Authorized Signature

Date (m/d/y)

Form: **CG-SDF-01****CUSTOM GRAPHICS SERVICES DESCRIPTION FORM****KINEXUS ORDER NUMBER**NAME: \_\_\_\_\_ COMPANY/INSTITUTE: \_\_\_\_\_  
(Authorized Representative or Principal Investigator)**Custom Services and Specifications**

Please refer to the Custom Graphics Customer Information Package for examples of the types of drawing services offered by Kinexus. Each service is available at a cost of US \$89. For the Kinetworks™ Overlay and Figures, please complete Sections A-E, for the Kinetworks™ Bar Graph complete Sections A-F, and for the Signal Transduction Pathway Chart, complete Sections A, B, C and Section G. If you need assistance completing this form, contact a technical service representative by calling toll free in North America 1-866-KINEXUS (866-546-3987) or by email at [info@kinexus.ca](mailto:info@kinexus.ca). Please fax a copy of the completed Graphics Services Description Form (CG-SDF-01) along with the Graphics Services Order Form (CG-SOF-01) to 604-323-3548, and we will email you confirmation of receipt. Please check the appropriate tick boxes.

<b>A. CUSTOM GRAPHICS SERVICE REQUESTED:</b> Choose the type of graphic service requested: <input type="checkbox"/> Kinetworks™ Blot Overlay <input type="checkbox"/> Kinetworks™ Bar Graph <input type="checkbox"/> Kinetworks™ Figure <input type="checkbox"/> Signal Transduction Pathway Chart		
<b>B. KINEXUS ORDER INFORMATION:</b> Kinexus Order Number: _____ Kinetworks™ Screen Type: _____	<b>C. FILE TYPE:</b> <input type="checkbox"/> JPEG <input type="checkbox"/> PDF <input type="checkbox"/> Photoshop <input type="checkbox"/> TIFF <input type="checkbox"/> EPS <input type="checkbox"/> Illustrator <input type="checkbox"/> PPT (M.S. PowerPoint)	<b>D. SAMPLE IDENTIFICATION:</b> Provide the sample identification and scan ID as described in the original order submitted: Sample 1: _____ Scan ID: _____ Control: <input type="checkbox"/> Yes <input type="checkbox"/> No Sample 2: _____ Scan ID: _____ Control: <input type="checkbox"/> Yes <input type="checkbox"/> No
<b>E. COLOUR SPECIFICATIONS:</b> <input type="checkbox"/> Colour *    OR <input type="checkbox"/> Black & White * For the colour option, chose one of the following: <input type="checkbox"/> Blue/Red <input type="checkbox"/> Green/Purple <input type="checkbox"/> Light blue/Orange <input type="checkbox"/> Green/Red	<b>F. BAR GRAPH ARRANGEMENT:</b> <input type="checkbox"/> List percent change from highest to lowest    OR <input type="checkbox"/> List alphabetically by target proteins (A-Z) *Indicate in Section D the sample to serve as the control	<b>G. SIGNAL TRANSDUCTION PATHWAY CHART:</b> Indicate the target proteins of interest and/or the signaling pathway you would like to have represented in your image: _____ _____

<b>A. CUSTOM GRAPHICS SERVICE REQUESTED:</b> Choose the type of graphic service requested: <input type="checkbox"/> Kinetworks™ Blot Overlay <input type="checkbox"/> Kinetworks™ Bar Graph <input type="checkbox"/> Kinetworks™ Figure <input type="checkbox"/> Signal Transduction Pathway Chart		
<b>B. KINEXUS ORDER INFORMATION:</b> Kinexus Order Number: _____ Kinetworks™ Screen Type: _____	<b>C. FILE TYPE:</b> <input type="checkbox"/> JPEG <input type="checkbox"/> PDF <input type="checkbox"/> Photoshop <input type="checkbox"/> TIFF <input type="checkbox"/> EPS <input type="checkbox"/> Illustrator <input type="checkbox"/> PPT (M.S. PowerPoint)	<b>D. SAMPLE IDENTIFICATION:</b> Provide the sample identification and scan ID as described in the original order submitted: Sample 1: _____ Scan ID: _____ Control: <input type="checkbox"/> Yes <input type="checkbox"/> No Sample 2: _____ Scan ID: _____ Control: <input type="checkbox"/> Yes <input type="checkbox"/> No
<b>E. COLOUR SPECIFICATIONS:</b> <input type="checkbox"/> Colour *    OR <input type="checkbox"/> Black & White * For the colour option, chose one of the following: <input type="checkbox"/> Blue/Red <input type="checkbox"/> Green/Purple <input type="checkbox"/> Light blue/Orange <input type="checkbox"/> Green/Red	<b>F. BAR GRAPH ARRANGEMENT:</b> <input type="checkbox"/> List percent change from highest to lowest    OR <input type="checkbox"/> List alphabetically by target proteins (A-Z) *Indicate in Section D the sample to serve as the control	<b>G. SIGNAL TRANSDUCTION PATHWAY CHART:</b> Indicate the target proteins of interest and/or the signaling pathway you would like to have represented in your image: _____ _____

<b>A. CUSTOM GRAPHICS SERVICE REQUESTED:</b> Choose the type of graphic service requested: <input type="checkbox"/> Kinetworks™ Blot Overlay <input type="checkbox"/> Kinetworks™ Bar Graph <input type="checkbox"/> Kinetworks™ Figure <input type="checkbox"/> Signal Transduction Pathway Chart		
<b>B. KINEXUS ORDER INFORMATION:</b> Kinexus Order Number: _____ Kinetworks™ Screen Type: _____	<b>C. FILE TYPE:</b> <input type="checkbox"/> JPEG <input type="checkbox"/> PDF <input type="checkbox"/> Photoshop <input type="checkbox"/> TIFF <input type="checkbox"/> EPS <input type="checkbox"/> Illustrator <input type="checkbox"/> PPT (M.S. PowerPoint)	<b>D. SAMPLE IDENTIFICATION:</b> Provide the sample identification and scan ID as described in the original order submitted: Sample 1: _____ Scan ID: _____ Control: <input type="checkbox"/> Yes <input type="checkbox"/> No Sample 2: _____ Scan ID: _____ Control: <input type="checkbox"/> Yes <input type="checkbox"/> No
<b>E. COLOUR SPECIFICATIONS:</b> <input type="checkbox"/> Colour *    OR <input type="checkbox"/> Black & White * For the colour option, chose one of the following: <input type="checkbox"/> Blue/Red <input type="checkbox"/> Green/Purple <input type="checkbox"/> Light blue/Orange <input type="checkbox"/> Green/Red	<b>F. BAR GRAPH ARRANGEMENT:</b> <input type="checkbox"/> List percent change from highest to lowest    OR <input type="checkbox"/> List alphabetically by target proteins (A-Z) *Indicate in Section D the sample to serve as the control	<b>G. SIGNAL TRANSDUCTION PATHWAY CHART:</b> Indicate the target proteins of interest and/or the signaling pathway you would like to have represented in your image: _____ _____

CUSTOMER HAS CAREFULLY COMPLETED THIS CUSTOM GRAPHICS SERVICES DESCRIPTION FORM TO IDENTIFY THE GRAPHICS SERVICES OF INTEREST:

\_\_\_\_\_  
Print Name of Authorized Representative\_\_\_\_\_  
Authorized Signature\_\_\_\_\_  
Date (m/d/y)